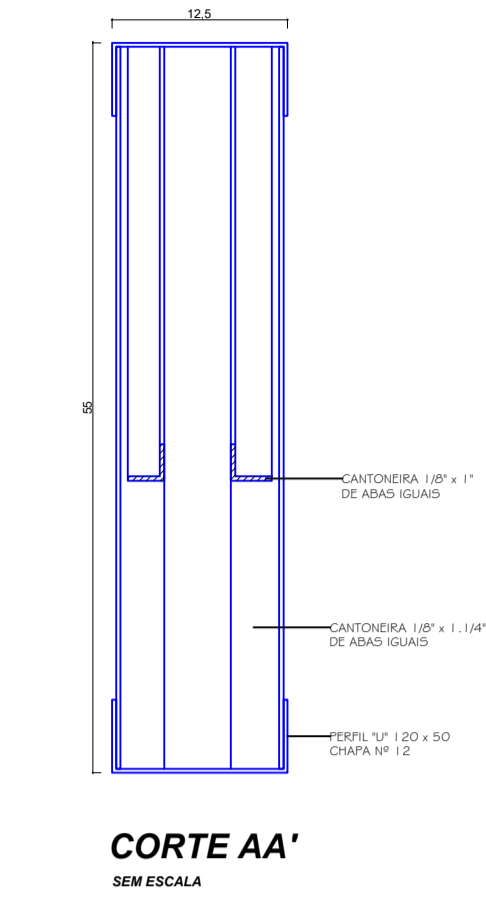
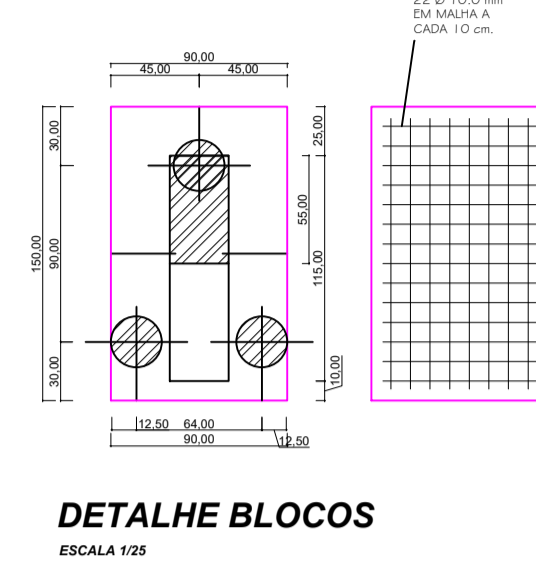


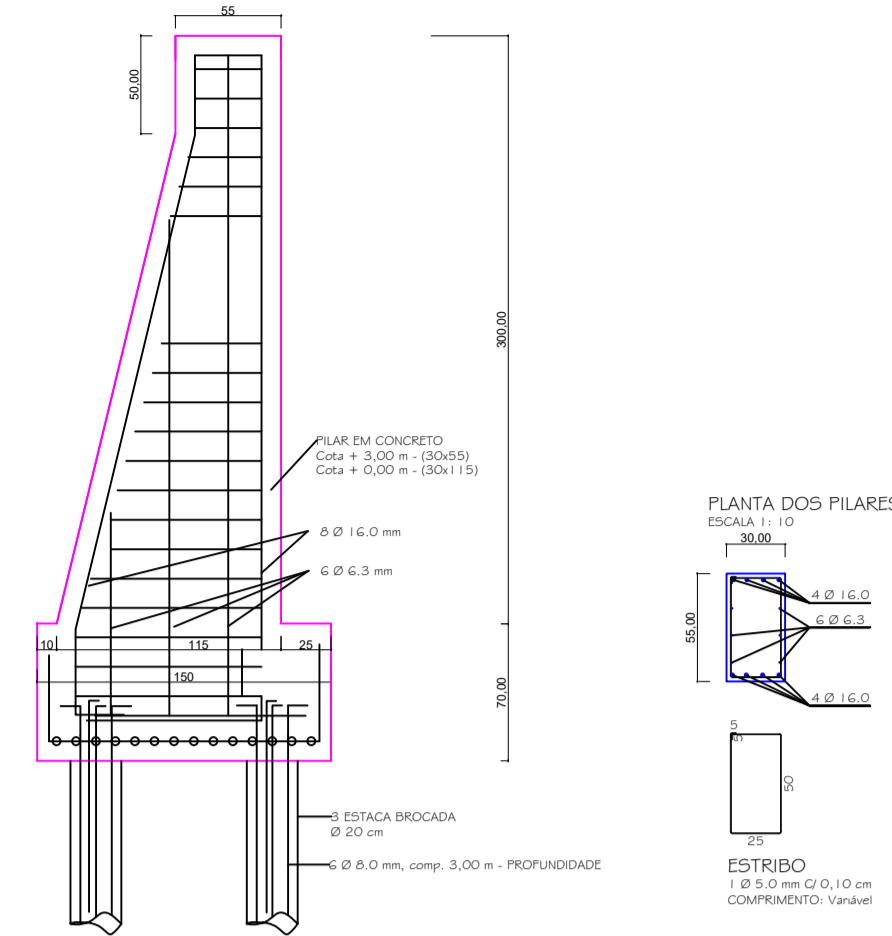
DETALHE ARCO METÁLICO
SEM ESCALA



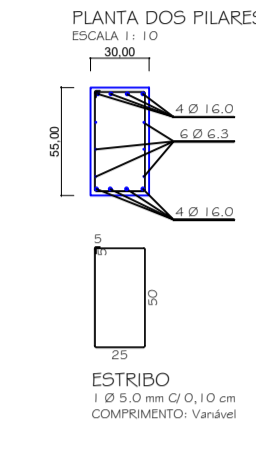
CORTE AA'
SEM ESCALA



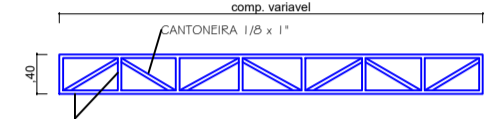
DETALHE BLOCOS
ESCALA 1/25



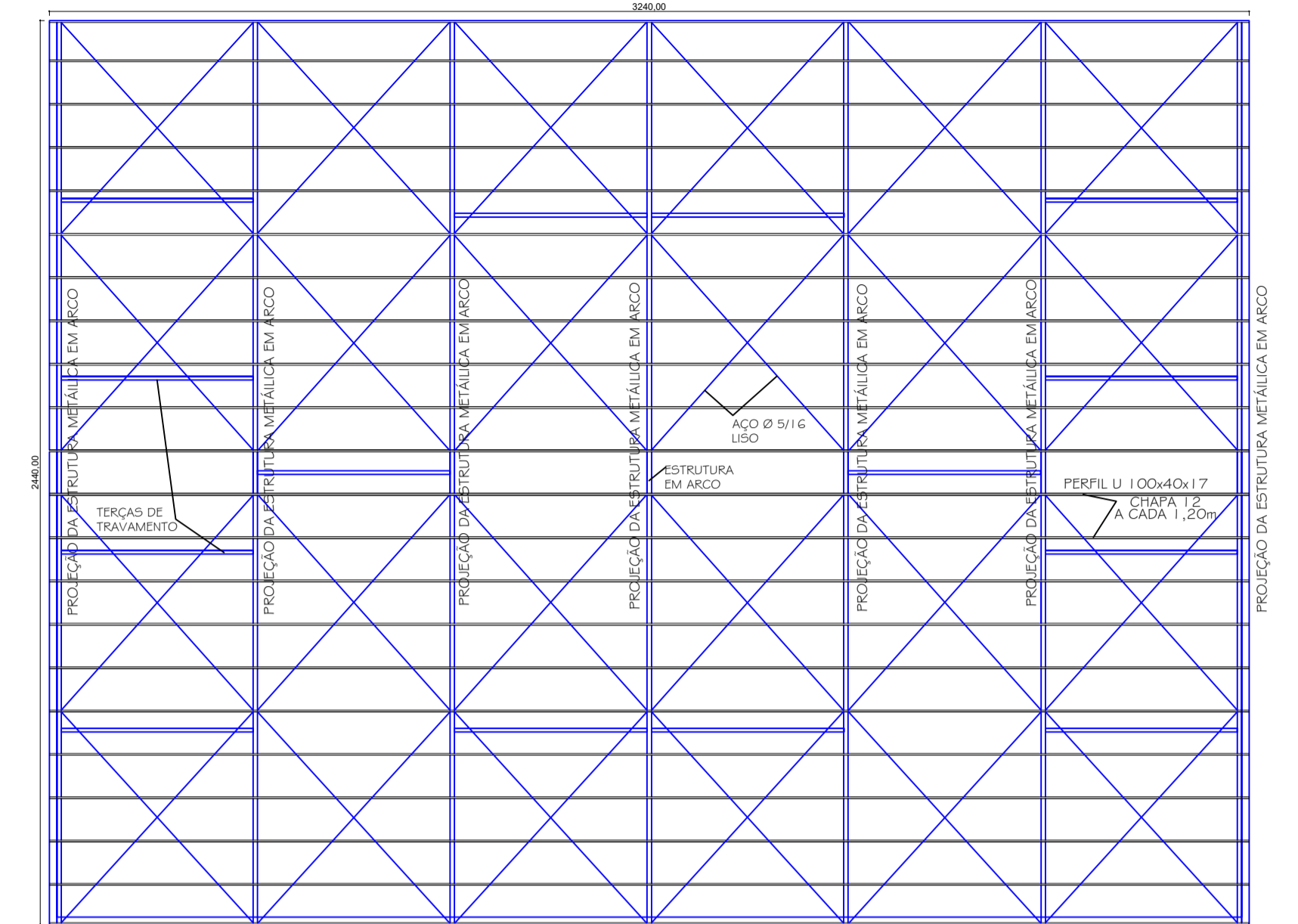
ESTACAS: 14,00 X 3 X 3,00 M = 126,00 M



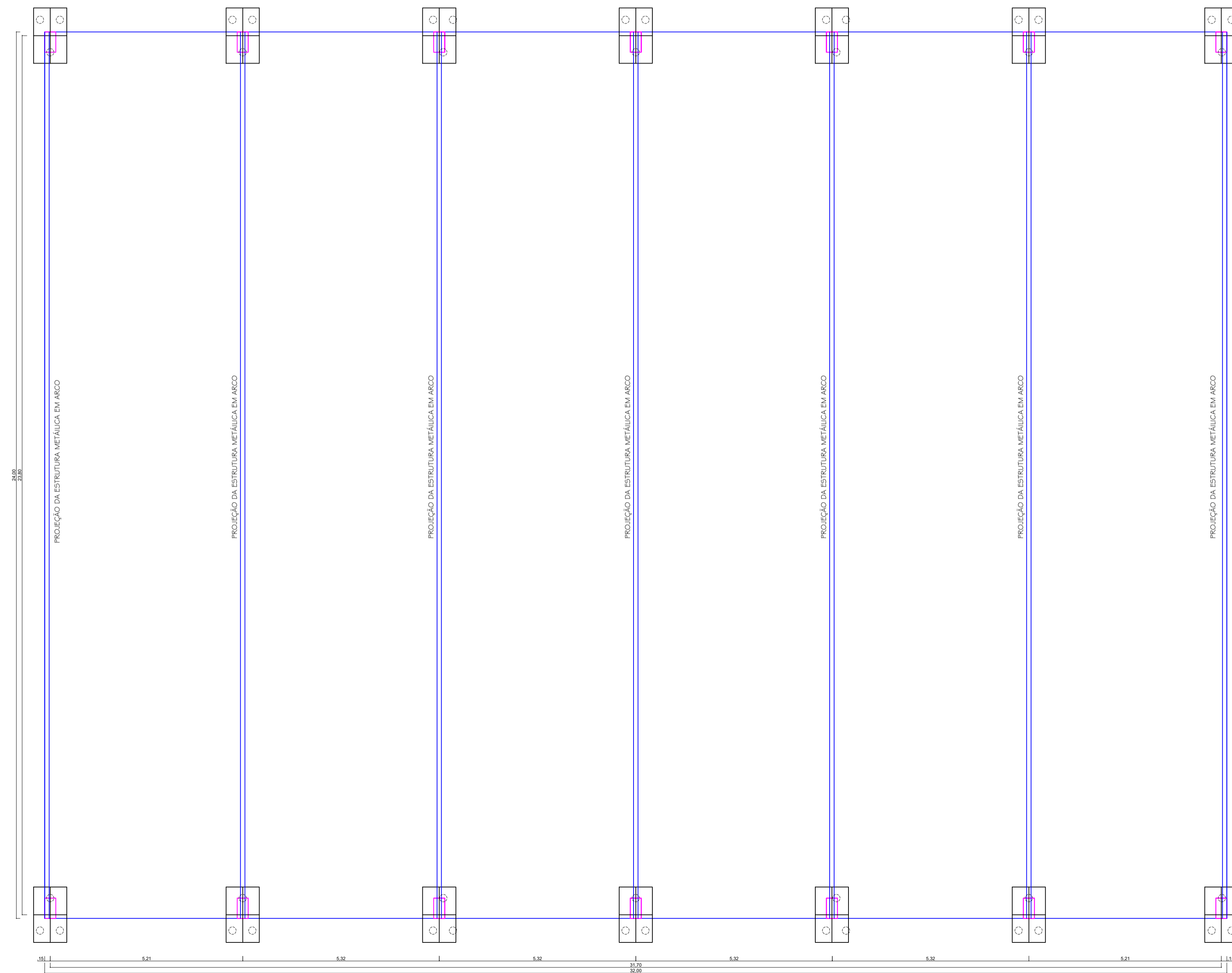
PLANTA DOS PILARES
ESCALA 1:10



DETALHE TRELIÇA METÁLICA P/ TRAVAMENTO
SEM ESCALA

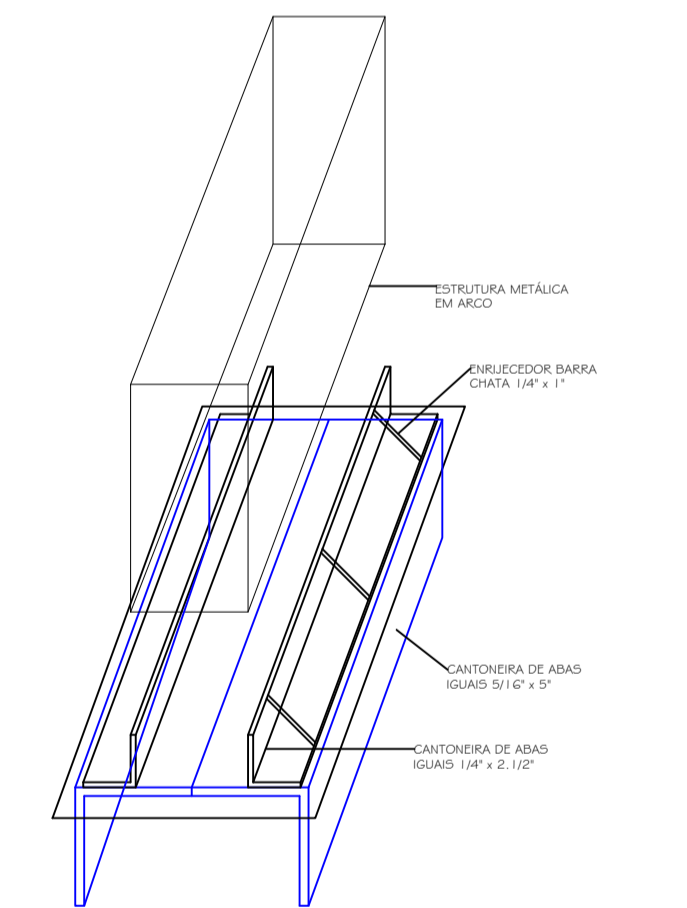


PLANTA DE COBERTURA
ESCALA 1/100



PLANTA DE LOCAÇÃO DE BLOCOS E PILARES
ESCALA 1/50

QUANTITATIVOS DE MATERIAIS PILARES E BLOCOS DE FUNDAÇÃO				
FORMAS	m ²	59,57 m ²		
AÇO	Kg	CA-50 Ø4,2mm (0,198kg/m)	CA-50 Ø6,3mm (0,248kg/m)	CA-50 Ø8,0mm (0,310kg/m)
		387,60	252,00	387,24
CONCRETO Fck=25Mpa	m ³	10,80		



DETALHE CHUMBADORES NO PILAR
SEM ESCALA

PROVAÇÃO

PREFEITURA MUNICIPAL DE SANTO ANTONIO DO SUDOESTE - PR.

Processo: **MUNICÍPIO DE SANTO ANTONIO DO SUDOESTE**

Obra: **QUADRA POLIESPORTIVA COBERTA**

Edifício: **PARQUE DE EXPOSIÇÕES**

Especificação: **PROJETO ESTRUTURAL DE QUADRA COBERTA**

Responsável Técnico: _____

3/5